



LEEDS INTERNATIONAL SCHOOL

Panadura | Matara | Galle | Horana | Ambalangoda | Matugama | Tangalle |
Negombo | Maharagama

Write your name here:

Surname	Other names
---------	-------------

Centre Number

--	--	--	--	--

Candidate Number

--	--	--	--

Geography

Form – I

1st Term Test 2022 / 2023

Time : 1 hour 30 minutes

Materials Required:

Instructions to Students

- Answer all the questions.
- Answer the questions in the spaces provided.
- Fill in the box at the top of this page with your full name and the class.

Information

- The total mark for this paper is 100.
- The marks for each question are shown in brackets.

Advice

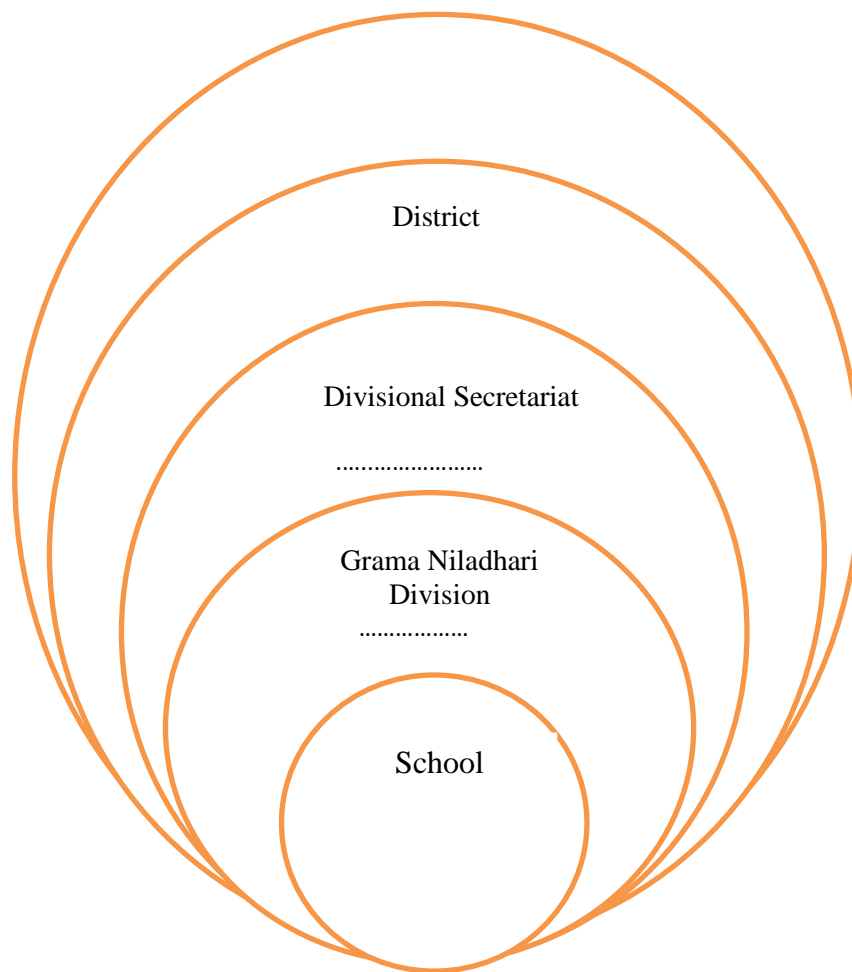
- Read each question carefully before you start to answer it.
- Try to answer every question.
- Please write your answers neatly and legibly.
- Check your answers if you have time at the end.

Q. No.	Marks
Q1	10
Q2	10
Q3	05
Q4	05
Q5	10
Q6	10
Q7	10
Q8	16
Q9	24
Total	100

Teacher's Name :

Signature :

3. State whether the following statements are “True” (T) or “False” (F).
- (a) Each Grama Niladhari Division in Sri Lanka has a name and a number. ()
 - (b) Each area has unique geographical features. ()
 - (c) Atmospheric conditions that prevailed for a long period in a particular place is called weather. ()
 - (d) It is important to identify the administrative unit when locating an area. ()
 - (e) Indicating the North in a sketch map is not necessary. ()
- (1 × 5 = 05 marks)**
4. Complete the following chart according to the location of your school.



(1 × 5 = 05 marks)
Total for part I = 30 marks

Part II

5. (a) Name four main directions. **[4]**
-
-
- (b) Name two main weather conditions in the environment. **[2]**
-

.....
(c) Name four main elements of weather.

[4]

.....
.....
.....
.....

Total for Question 5 = 10 marks

6. (a) Name two types of geographical features.

[2]

.....
.....

(b) Name two public places close to your school

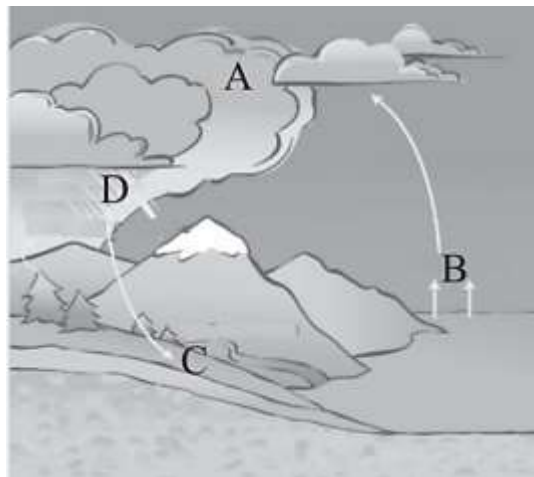
[4]

.....
.....

(c) The following picture shows the process of precipitations. Name A, B, C, and D.

- A.
- B.
- C.
- D.

[4]



Total for Question 6 = 10 marks

7. (a) Write two uses of rain to man.

[2]

.....
.....

(b) Explain the difference between a picture and a sketch map.

[4]

.....
.....

(c) Write four sentences about the landscape of the school according to the figure. [4]

.....

Total for Question 7 = 10 marks

8. (a) Shade two Provinces in Sri Lanka. [4]
 (b) Name and shade two districts in Southern Province. Matara, Hambantota. [4]
 (c) Shade Galle district in green and name it on the map. [6]
 (d) Color the province that your school belongs to. [2]

Total for Question 8 = 16 marks

9. (a) Fill the grid using the information on weather [8]

Element of the Weather	Equipment that measure	Unit that measure
1.	2.	Millimeters
Temperature	3.	4.
Speed of the Wind	5.	6.
7.	8.	Direction shown by the arrow

(b) Write 2 uses to a man from knowing the weather report. [4]

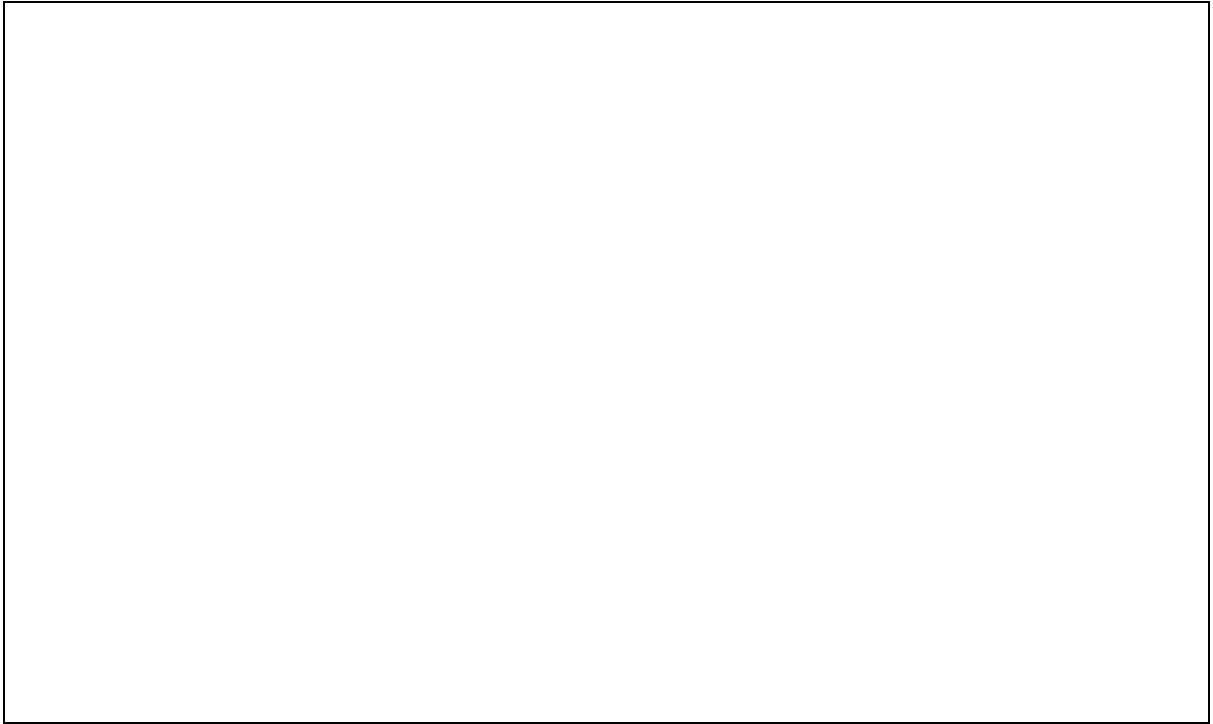
.....

(c) Imagine your school is located in a hilly area. What will be the geographical appearance of your school and its immediate surroundings? [7]

.....

(d) Draw a plan of your school garden.

[5]



Total for Question 9 = 24 marks

TOTAL FOR PAPER = 100 MARKS

END

Prepared By : Ms.Nimanka Sayuri Liyanage
Set By : Ms.Nimanka Sayuri Liyanage